



# ANNUAL REPORT

The team behind your care

# 2024





*In the spirit of reconciliation Bethesda acknowledges the traditional owners of the land on which Bethesda sits, the Whadjuk people of the Nyoongar nation. We pay our respects to Elders past, present and emerging and acknowledge and respect their continuing culture and contribution they made to the life of this city and this region.*

# Contents

<b>About.....</b>	<b>2</b>	<b>Innovation .....</b>	<b>18</b>
Bethesda's Beginnings .....	2	Theatre Optimisation Completed July.....	18
Facilities & Services .....	5	Power BI Reporting Management.....	18
Mission, Vision & Values .....	6	Cyber Security .....	19
Chairman & CEO Report .....	8	AHPRA Checks for Nurses.....	19
<b>Culture .....</b>	<b>12</b>	<b>Sustainability.....</b>	<b>20</b>
80th Anniversary.....	12	Work Health and Safety .....	20
WA Nursing and Midwifery Awards x2.....	12	Bethesda Clinic Closure .....	21
Palliative Care in WA Awards.....	12	Nitrous Oxide Survey .....	21
Reopening of the Chapel .....	12	Gloves Off Campaign.....	21
NAIDOC Week Yarn .....	12	Strategic Directions 2024 - 2027.....	21
Platinum Status for WHS .....	12	<b>Statistics.....</b>	<b>22</b>
Christmas Lunch and Gifts .....	12	<b>Governance .....</b>	<b>24</b>
Weddings on the PCU .....	12	Committee Structure .....	24
<b>People .....</b>	<b>14</b>	Board of Directors .....	25
Graduate Nurse Program.....	14	Medical Advisory Committee .....	26
Careers Events .....	14	Bethesda Management Forum.....	27
Matron Beryl Hill Exemplary -		<b>Specialists Accredited to Practice.....</b>	<b>29</b>
Professional Practice Award .....	14		
Celebrating our Volunteers .....	14		
Emerging Leaders Program .....	14		
Farewell to Christine Hurley .....	14		
HSU and EBA Agreements Voted Up.....	14		
National Volunteer Week .....	15		
Leadership Performance -			
and Wellbeing Program.....	15		
Employee Development .....	15		
<b>Consumer Engagement</b>			
<b>&amp; Patient Experience .....</b>	<b>17</b>		
Cuddle Bed Fundraiser.....	17		
Blanket Warmer for the PCU.....	17		
RACGP Events .....	17		



# Bethesda's Beginnings

*Bethesda Health Care is a private, not-for-profit, independent acute surgical and specialist palliative care organisation with nine state-of-the-art operating theatres and a community palliative care service.*

With its hospital situated on the shores of Perth's picturesque Derbarl Yerrigan (Swan River), overlooking Freshwater Bay in Claremont, Bethesda has been providing care and services to the Western Australian community for 81 years.

Bethesda's beginnings were with the Churches of Christ and although the healthcare business is managed separately from church affairs, these important linkages are held dear to Bethesda.

Bethesda began as a small community-based hospital named St Andrews, in Hamersley Road, Subiaco, caring for the spiritual and physical needs of patients through a partnership developed between Bethesda's founder, Matron Beryl Hill, and the local Subiaco Church of Christ in 1943.

Bethesda Hospital on Queenslea Drive was purchased and established in April 1945. Patients were moved from the Subiaco Hospital site and Bethesda was officially opened in July 1945.

Thank you to everyone who has been a part of Bethesda Health Care. Thank you for providing, and continuing to provide, compassionate, safe, patient-centred care.







# Facilities & Services

*Bethesda offers a range of clinical specialties and onsite services that ensures its dedicated team continues the tradition of excellence in patient care for years to come.*

Bethesda is comprised of 68 overnight beds, 18 day procedure beds, and modern, high quality facilities. Bethesda has nine operating theatres, a day procedure unit, two inpatient wards, a range of diagnostic services and medical consulting suites. Surgical specialties include orthopaedics, urology, general surgery, gynaecology, plastic and reconstructive, fertility, pain management, oral/maxillofacial and sleep studies.

Along with a dedicated surgical ward, Bethesda also conducts an inpatient Palliative Care Unit and the Metropolitan Palliative Care Consultancy Service. Both programs are highly-regarded due to their superior reputation for providing specialised care for those who are in their end stage of life.





# Mission, Vision & Values

**Integrity**

We demonstrate honesty and trust.

**Compassion**

We work to express God's love through a caring expression of kindness, tolerance and tenderness.

Our Mission is to deliver the highest quality healthcare experience for patients. We do this by embracing Christian-based values and working together to express God's love through a caring expression of kindness, tolerance and tenderness.

Our Vision is to be the preferred choice for patients, doctors, and staff, and be recognised for the provision of high quality, acute surgical services and palliative care.

**Teamwork**

We create an environment of unity and togetherness.

**Respect**

We recognise and acknowledge the uniqueness and value of every individual.

**Excellence**

We excel in all that we do, so that we can promote our Mission.

**Professionalism**

We have pride in the high-level care and service we offer.





# Chairman & CEO Report

In our report last year, we noted at the outset our two major projects, being Bethesda Clinic and the Theatre Suite Optimisation.

There was much anticipation about the future of Bethesda Clinic. With a gradual uptake of beds and sustained effort by our psychiatrists and staff, we were hopeful of providing holistic mental health services to communities south of the river.

Due to unforeseen shortfalls in reimbursement from our health insurance funders it became obvious that with no real change on the horizon, the project was financially unviable.

Regrettably, we were one of many hospitals in Australia forced to close due to, what organisations like the Australian Medical Association have termed, "a health system crisis", particularly amongst the private hospitals. As we now know, Bethesda Clinic was not immune from this situation.

The Federal Government is currently conducting a review to examine the viability of the private hospital system and a recent article in the medical press confirmed that the system is "beset by a system-wide staffing crisis, most particularly in psychiatry".

Fortunately, Bethesda Clinic will operate as a mental health hospital in the coming years thanks to a sensible decision by the State Government to operate it under South Metropolitan Health Service management.

We wish to acknowledge all the staff employed by us while the Clinic was operating and for their efforts to make the hospital viable.

We are happy to advise Bethesda Health Care in Claremont continues to thrive and our decision to upgrade our theatres has been a resounding success. We are achieving close to maximum use of the theatres, ensuring Claremont had a successful year.

Success is only achieved through hard work and great management. All staff have worked exceptionally hard to support our doctors and each other, and especially our Executive and management teams who have ensured that our systems remain effective and efficient, and that patient care remains at the centre of all we do.

We have managed to retain long serving staff and have had great success in our Graduate Nurse Program, whereby we are training the future of our nursing staff. This program has been a resounding success due to the exceptional efforts of our Staff Development Educators and those who assist in their development. It is exciting to be training our own people.



Our inpatient and community palliative care teams have both had a marvellous year. The work of our dedicated staff on the Palliative Care Unit (PCU) continues to be recognised in the community and by the families of our patients as providing caring, sensitive, and professional end-of-life care.

MPaCCS continues to be recognised at community and Government levels for the provision of outstanding care and training they provide. Such is the recognition of this work that we have been able to secure a long term contract for the continued provision of these services.

This year we have continued to develop our Emerging Leaders' Program. This program invites participants to better understand their role in the organisation and gives them the scope and encouragement to value add to the day to day running of the hospital.

In the middle of the year the Board and the Executive team met for a half-day strategic directions planning session to arrive at a strategic pathway for the Hospital for the next three years.

At our annual Celebration Day, we were inspired by the recognition of over 400 years of service of awardees and congratulations to Fiona Moody, Palliative Care Area Coordinator, for receiving the Matron Beryl Hill Award for Exemplary Practice. We also sadly and fondly farewell our Manager of Hotel Services, Roh Siriwardena, who retires after 17 years of wonderful service to Bethesda.





Throughout the last year there have also been some notable achievements. These include:

- An Excellence in Enrolled Nursing Award at the 2023 WA Nursing and Midwifery Awards given to Bruno Cordier, Enrolled Nurse on the PCU.
- Bethesda was named a finalist in the Outstanding Team in Delivering Holistic Palliative Care at the Palliative Care in WA Awards.
- Bethesda was awarded for the sixth consecutive time (over a period of 12 years) the WorkSafe WA Platinum Status Award. We are the only hospital to have achieved this milestone.
- The hospital received continued four-year accreditation from the Australian Council on Healthcare Standards. A huge achievement from the Quality team, who also achieved accreditation for Bethesda Clinic in the same year.
- Dr Neale Fong received the ACHS Gold Medal for his commitment over his career to Safety and Quality in Healthcare.

We acknowledge the commitment of our Board members over the past year and thank them all. Some tough considerations were debated, and good outcomes were reached.

We extend our thanks to the Bethesda Management Forum, the Medical Advisory Committee, and the many sub-committees for their continued diligent work and for their commitment to Bethesda through a difficult year.

We thank our dedicated doctors, nurses, and ancillary staff for their work to achieve outstanding results for our patients, and for their continued support of our hospital.

Our volunteers continue to provide an essential service toward hospital operations and ensure that our patients and their loved ones are supported and treated with compassion. We thank all our volunteers for their continued support.



Finally, we extend our genuine thanks to all staff for their support, care, and efficiency without which we could not achieve the outcomes we reach and could not deliver the quality experience we seek to deliver to our patients.

The immediate future will be challenging as we move into the year ahead. With diligent attention to detail and strong management we believe that Bethesda will continue to deliver our Mission.

**Dominic Bourke, Chairman**

**Dr Neale Fong, Chief Executive Officer**



# Culture

## 80<sup>th</sup> Anniversary

2023 was a special year for Bethesda, as the hospital celebrated its 80th anniversary. The anniversary was marked and celebrated on Celebration Day. It was a wonderful event, attended by keynote speaker Nic Naitanui, Bethesda members, church members, the Town of Claremont Mayor, the Board, staff, doctors and volunteers. Length of service was recognised for many staff, including Steve Taylor (Chef) who celebrated 30 years!

## WA Nursing and Midwifery Awards x2

Bethesda are always pleased to sponsor the WA Nursing and Midwifery Awards. Congratulations to Bruno Cordier, Enrolled Nurse on the PCU, for being awarded the Excellence in Enrolled Nursing Award in 2023. The 2024 Awards were held in May and the hospital sent a table to enjoy the night with colleagues from around WA.

## Palliative Care in WA Awards

Bethesda was fortunate to be nominated in the category of Outstanding Team Delivering Holistic Palliative Care.

## Reopening of the Chapel

The 'new look' Chapel opened in July alongside the completion of the theatre optimisation project. The Chapel has been resized and refurbished to provide solace to patients and visitors going through a difficult time. The story behind the word 'Bethesda' remains on the exterior to remind everyone where 'House of Mercy' originates.

## NAIDOC Week Yarn

Bethesda hosted its first yarn in celebration of NAIDOC week where we learnt how individuals and organisations can contribute positively to reconciliation and closing the gap. The morning tea was catered by local Aboriginal business Tamalee's Cakes and Bunning's donated native herbs, now planted in the hospital herb garden.

## Platinum Status for WHS

Bethesda remain the only hospital in WA to have achieved Platinum Status with WorkSafe WA for six consecutive two-year periods. This is a true testament to the safe working culture fostered at the hospital, and of staff looking out for patients and each other.

## Christmas Lunch and Gifts

Staff were treated to the kitchen's famous Christmas ham and salad rolls on the last day of the theatre year. Spirits around the hospital were high, with everyone excited about their upcoming holidays and the gift of a lunch cooler bag!

## Weddings on the PCU

Bethesda were honoured to host two weddings this year on the PCU. These beautiful memories meant so much to the families involved, with staff pitching in to ensure the ceremony and reception celebrations were a beacon during a very difficult time.





# People

## Graduate Nurse Program

The Graduate Nurse Program continues to be a success, with the third cohort of nurses currently progressing through the specialised Perioperative Graduate Nurse Program. Growing Bethesda's future workforce by investing in graduates is proving invaluable, with a 100% retention rate after graduation.

## Careers Events

The Learning and Development team participated in several careers' events, representing Bethesda at WA's top universities in Notre Dame, Curtin, and ECU. These careers events provide an opportunity to promote the Graduate Nurse Program and recruit future students.

## Matron Beryl Hill Exemplary Professional Practice Award

Congratulations to Rohitha Siriwardena (Manager Hotel Services) and Sally Winfield (Clinical Nurse Manager Surgical) on being awarded the joint recipients of the Matron Beryl Hill Exemplary Professional Practice Award in 2023. This is the highest level of recognition offered to staff at Bethesda.

## Celebrating our Volunteers

Volunteers play an integral role at Bethesda and contribute extensively to the Bethesda Foundation through fundraising events. The successful Mother's, Father's and Christmas Day raffles and bake sales are loved by staff, visitors, and patients, with all monies raised going towards special items for the PCU.

## Emerging Leaders Program

The Emerging Leaders Program is designed to develop a new generation of leaders equipped to lead Bethesda into the future. This year eight staff members participated in the program, comprised of monthly education sessions and a group project that is presented to management and the Board. The projects presented were relevant, with many already implemented around the hospital, such as the toiletries on request initiative to reduce plastic waste.

## Farewell to Christine Hurley

The hospital said goodbye to much-loved nurse Christine Hurley after 31 years of service. Christine finished her nursing career as the After-Hours Coordinator on Riviera Ward and was an integral member of the surgical team for many decades.

## HSU and EBA Agreements Voted Up

The Health Services Union Agreement was successfully voted up in April for the next three years. An overwhelming 89.19% of staff approved the new agreement. The Registered Nurses Enterprise Agreement was also successfully voted up with a 66.2% approval rate.

## National Volunteer Week

National Volunteer Week was celebrated with a lovely lunch at Crown Perth. Bethesda were fortunate to receive a grant from Lotterywest that enabled the hospital to give back to the volunteers who are so selfless in their tasks.

## Leadership Performance and Wellbeing Program

The Performance Story initiative launched in September, with a focus on leadership development, mental health support and coaching services for all 28 managers. This added level of support assists managers with people management and ensures self-care is prioritised.

## Employee Development

A new suite of online learning modules was rolled out to staff covering difficult conversations, diversity, discrimination, and sexual harassment. These new additions contribute to providing a solid foundation for all staff.







# Consumer Engagement & Patient Experience

## Cuddle Bed Fundraiser

Bethesda had a goal of purchasing a 'cuddle bed' for the Palliative Care Unit, which was realised in July thanks to the fundraising efforts of the Bethesda Foundation and our volunteers. Cuddle beds are a larger sized hospital bed that allows a patient and their loved ones to be physically closer to one another during end-of-life care. This small act of closeness has already had a significant impact on many of our patients and their loved ones.

## Blanket Warmer for the PCU

Proceeds from multiple successful volunteer fundraising campaigns enabled the hospital to purchase a new blanket warmer for the Palliative Care Unit. There is nothing quite like the comfort of a warm blanket.

## RACGP Events

Engagement with Bethesda's Visiting Medical Officers (VMOs) is a high priority. Bethesda hosted several RACGP events this year to showcase our VMO's specialties and promote their services. Dr John Salmon and Dr Stephanie Davies (Pain Management Specialists) hosted an event in February and Dr Paula Moffat and Dr Gillian Mitchell (Palliative Care Specialists) hosted an event on Deprescribing in Elderly Palliative Patients in June. Both events were well attended and attracted a diverse mix of General Practitioners.





# Innovation



## Theatre Optimisation Completed July

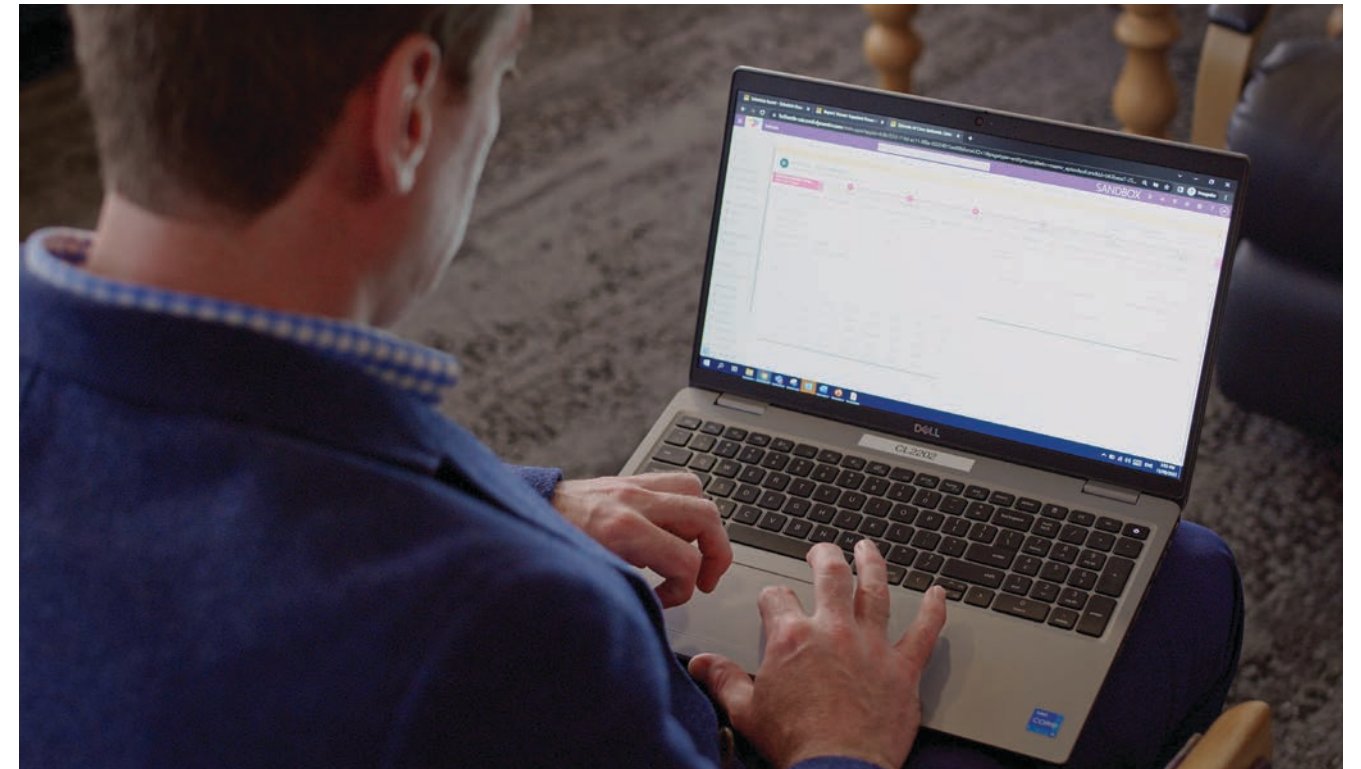
The Theatre Optimisation Project reached a significant milestone with the successful completion of nine state-of-the-art operating theatres, designed to accommodate all surgical specialties. This extensive multi-year project involved meticulous planning and coordination to ensure that each theatre meets the highest standards of efficiency and safety. The upgraded facilities are now fully operational, and feedback from surgical teams has been positive.

## Power BI Reporting Management

Bethesda's business intelligence reporting tool, Power BI, has been instrumental in streamlining reporting across the organisation. Power BI is being used by a range of staff across the organisation to assist data driven decision making.

The Health Information Management team recently had a new suite of Power BI reports rolled out to assist with State Government compliance reporting. The suite of reports has streamlined a once manual process and provided standardisation.

Another great example of how Power BI is being used is the Financial Dashboard. The dashboard is being used by all department managers to monitor budgets against actual spend in any given month and provides a visual snapshot of the departments financial performance to ensure any overspends are explained and corrected where necessary.



## Cyber Security

ICT implemented several cyber security initiatives this year to better protect the hospital. Multifactor authentication is now a requirement for all remote connections, reducing the risk of unauthorised access and helping to safeguard sensitive patient data, and AI-based cyber security platform, Darkface, was implemented to monitor and protect all email, network, and cloud environments. Staff are now required to complete the Digital Health Security Awareness mandatory training eLearning course provided by the Digital Health Agency, which has improved cyber security awareness.

## AHPRA Checks for Nurses

Automated AHPRA registration checking was implemented this year via the online Equifax platform. This newly automated process is saving countless hours in the People and Culture department and is a quality improvement in checking for any notable incidents.



# Sustainability

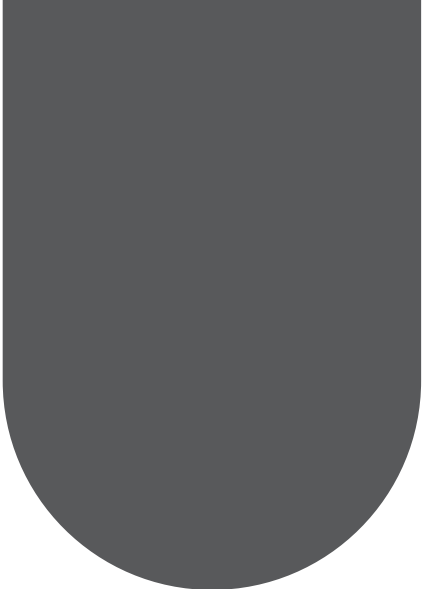
## Work Health and Safety

Bethesda's Work Health and Safety performance for 2023/24 was strong, inclusive of the opportunities and challenges presented by the ongoing transition of Stage 2 to the harmonised WHS Laws, commissioning and operation of Bethesda Clinic and preparation for the introduction of the new Workers Compensation and Injury Management legislation.

In October 2023, Bethesda was awarded its sixth consecutive Platinum Certificate of Achievement by WorkSafe WA after undergoing external assessment under the WorkSafe Plan in August 2023. A celebration of this achievement was held in February 2024, where the WorkSafe WA Commissioner, Sally North, formally presented this latest award. Bethesda Clinic was the first mental health hospital in WA to have achieved a Platinum Certificate of Achievement and Bethesda are the only organisation across any industry in WA to have been awarded six consecutive Platinum awards. These results are testament to the strong commitment throughout the organisation to work health and safety.

### Key Work Health and Safety initiatives during the year included;

- Prevention of slips, trips and falls, safe manual tasks, mentally healthy workplaces and prevention of occupational exposures.
- Preparedness to transition to the new Workers Compensation and Injury Management legislation.
- Implementation of a new mandatory Work Health and Safety for Managers online module.
- Active participation in Safe Work October 2023 promoted the key focus areas including Mental Health Week across Bethesda.
- In late 2023, Bethesda expanded the number of accredited Mental Health First Aiders to 13.



## Bethesda Clinic Closure

The difficult decision to suspend services at Bethesda Clinic was made by the Board in January. Bethesda Clinic was operational for 12 months and despite the Clinic's commitment to providing essential private mental health services, various financial challenges necessitated this difficult decision. Bethesda are grateful for the dedicated efforts of all staff and the support from the community during its operation. The consumers who received care at the Clinic are much better for it.

The State government has taken over the building lease for a minimum of three years with options, offering public mental health care to the community. The decision on the future of the building is part of Bethesda's Strategic Directions 2024-2027.

## Nitrous Oxide Survey

Anaesthetists were surveyed earlier in the year about Nitrous Oxide usage at the hospital. Nitrous Oxide has significant carbon dioxide emissions and the possibility of decommissioning the pipeline was considered. The feedback was in favour of the sustainable theatre initiative, however further collaboration is ongoing prior to any decision to decommission.

## Gloves Off Campaign

Gloves Off encourages individuals in clinical areas to 'stop' and think about whether putting gloves on in that moment is necessary. The Gloves Off initiative is reducing Bethesda's carbon footprint and saving excess wastage from landfill.



## Strategic Directions 2024 - 2027

Bethesda are focussed on three strategic themes over the next three years to achieve its Vision.

### 1. Focused on Strengths and Being Fit for Purpose

We will enhance the patient experience. We will improve each patient's journey through efficient administration, people, finance, and supply chain processes and practices.

We will harness data analytics and digital health technologies to understand our business and so enhance our service performance.

### 2. Future of Bethesda Clinic

We will address the future of Bethesda Clinic services and determine the options for clinical services, partnerships to deliver services, and the best use of infrastructure.

### 3. Future Growth Opportunities

We will focus on growth through expanding current surgical and palliative care services, and improving our facilities. Growth will be targeted to our organisational strengths and capability to fulfil these opportunities.



# Statistics

2023/2024 Financial Year

 Episodes of Care

12,406

Theatre Bookings



7,902

Day

4,504

Overnight



13,198

Claremont Admissions

642

Embryo Transfers



4058

Volunteer Hours

Figures are based on rosters and not an attendance register.

Theatre operating hours



11,751

Hours = 489.6 days



371

Sleep Studies

63.7%

same day cases



78

clinical staff  
currently  
ALS1 certified



19,552

Bed Days

11,642

In Patient

7,910

Same Day



23/2024  
Average Loss  
Time Injury (LTI)

4.85

Average LTI  
at Bethesda

12.6

Average LTI  
in WA\*

\*(WorkCover Industry Report Statistics 2022-2023 Pub October 2023)



421

Palliative Care  
Admissions



23.1%

Electronic  
Patient Feedback  
Response



9.5

Net Promoter  
Score

Hand Hygiene Compliance (HHC)



87.2%

Average HHC  
at Bethesda

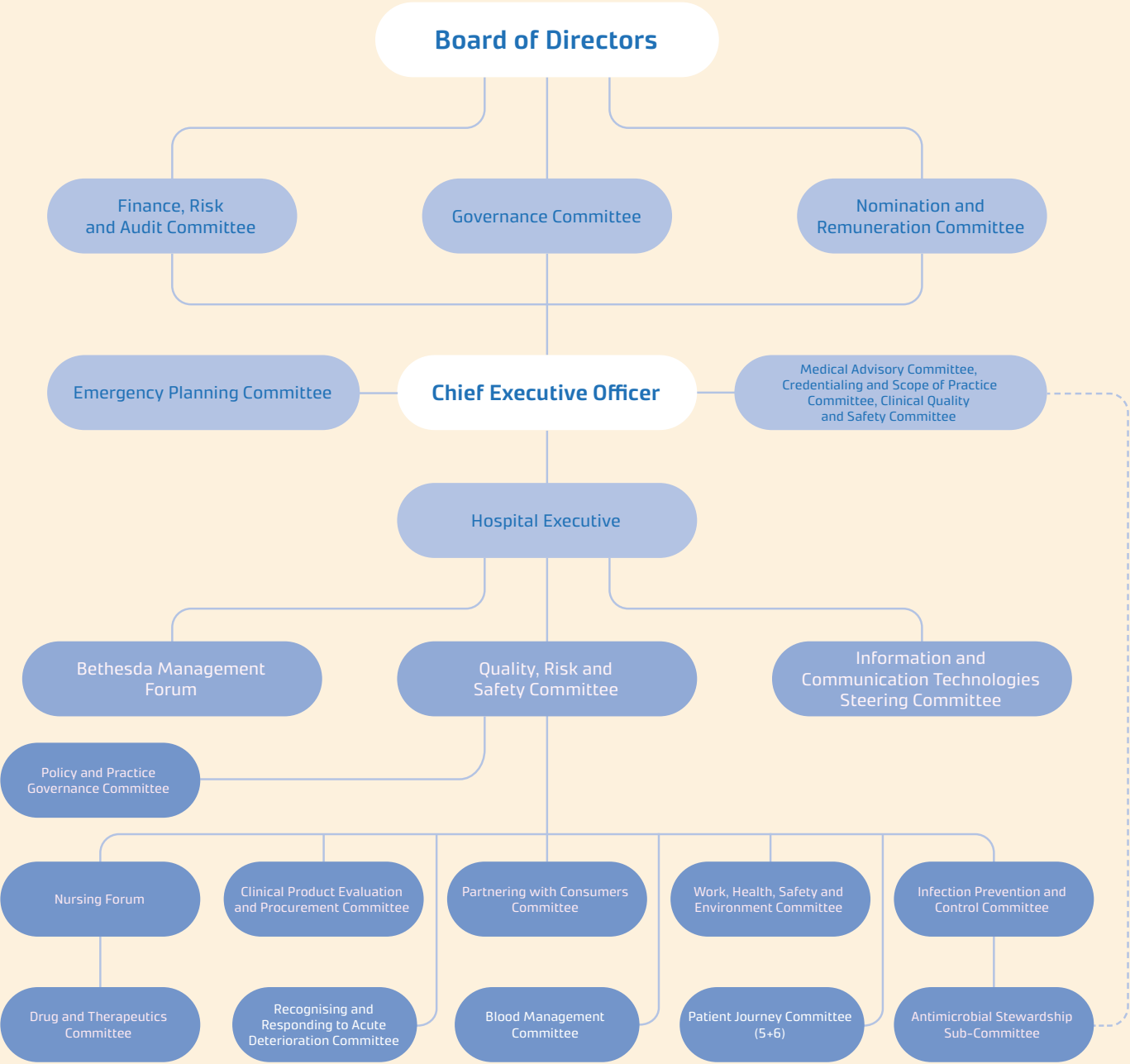
94%

of admissions at  
Claremont were  
surgical



# Governance

Bethesda Health Care Committee Structure



## Board of Directors

The Board of Directors have many years of combined experience in leading and managing successful businesses. As a group, they have held senior positions in health and aged-care-related entities, politics and private companies, having influence on the future of healthcare in Australia.

Photo left to right: Colin Barnett Board Director, Grant Robinson Treasurer and Deputy Chairman, Jill Downie Board Director, Dominic Bourke Chairman, Neale Fong Chief Executive Officer.



Medical Advisory Committee

Our Medical Advisory Committee is comprised of Visiting Medical Officers who broadly represent the specialties at the hospital. This Committee meet approximately every two months, working collaboratively with the CEO and executive to ensure the clinical standards and patient care at Bethesda are at superior levels.



**Toby Leys**  
MBBS (WA),  
FRACS (Orthopaedics),  
Fellow AOA, Chairman



**Silke Brinkmann**  
MBBS (Hons), FRANZA,  
Deputy Chair



**Grant Booth**  
MBChB, FRACS



**Keiron Bradley**  
MBBS, AChPM  
MMed (Pall Care),  
PGDipLATHE (Oxford University)



**Jeff Ecker**  
FAOrthA, FRACS, MBBS,  
BMedSc (Hons) (resigned  
December 2023)



**Franc Henze**  
MD, DMD, BScDent (Hons),  
FRACDS, FRACDS (OMS),  
PostgradDipDentImplantology,  
GradCertAviationMed, JP



**Melvyn Kuan**  
MBBS, FRACS



**Mark Lee**  
MBBS, FRACS (Plastic Surgery)  
(resigned December 2023)



**John Love**  
MBBS, FRANZCOG



**Duncan McLellan**  
MBBS, MRCP (UK), FRACP,  
FRCPA



**Jamie Stevens**  
Bsc. MBBS (Hons) FANZCA



**Simon Zilko**  
MBBS, FRACS (ORTHO),  
FAORTHA

Bethesda Management Forum

Bethesda has an extremely committed team of individuals who form the Bethesda Management Forum. As a group, they are responsible for ensuring the various business activities of their respective departments are aligned to the strategic direction of the organisation.



**Dr Neale Fong**  
Chief Executive Officer



**Donelle Rivett**  
Executive Manager, Corporate  
Support and Projects and  
Director of Nursing



**Nigel Miller**  
Executive Manager, Finance  
and Support Services



**Eve Dawson**  
Executive Manager, People  
and Culture



**Renee de Prazer**  
Executive Manager, Clinical  
Services (resigned Sept 2024)



**Libby Oakes**  
Executive Manager, Quality,  
Risk and Infection Control



**Melody Miles**  
Executive Manager, Work  
Health and Safety



**Dr Richard Bostwick**  
General Manager, Bethesda  
Clinic (retired March 2023)



**Trish Barrett**  
Manager, Patient Services



**Neville Black**  
Manager, Supply



**Elizabeth Brearley**  
Clinical Nurse Manager,  
Palliative Care



**Emma Brown**  
Manager, Quality (maternity  
leave from March 2024)





**Roselyn Field**  
Manager, Health Information  
(resigned January 2023)



**Caroline Fotheringham**  
Manager, Quality



**Lester Javier**  
Manager, Hotel Services



**Shanie Liyanage**  
Manager, Supply (resigned  
July 2024)



**Dr Marie Murphy**  
Manager, Learning and  
Development



**Tuyen Nguyen**  
Manager, Information and  
Communication Technology



**Bernadette Nowak**  
Manager, Metropolitan  
Palliative Care Consultancy  
Service



**Jean Robinson**  
Manager, Health Information



**Helen Round**  
Manager, Perioperative  
Services



**Rohitha Siriwardena**  
Manager, Hotel Services  
(retired September 2024)



**Philippe Tercier**  
Manager, Engineering



**Sally Winfield**  
Clinical Nurse Manager,  
Surgical

# SPECIALISTS ACCREDITED TO PRACTICE

## ORTHOPAEDICS

**Mr Grant Booth**  
Orthopaedic Surgeon  
Perth Shoulder Clinic  
Bethesda Hospital,  
25 Queenslea Drive  
Claremont WA 6010  
9340 6355

**Mr Jeff Ecker**  
Orthopaedic Surgeon  
Jeff Ecker Clinic  
Bethesda Hospital  
Claremont WA 6010  
9334 0750

**Mr Michael Finsterwald**  
Orthopaedic Surgeon  
Coastal Orthopaedic Group  
Bethesda Hospital,  
25 Queenslea Drive  
Claremont WA 6010  
9230 6333

**Mr Benjamin Hewitt**  
Orthopaedic Surgeon  
47 Stirling Highway  
Nedlands WA 6009  
9322 1990

**Mr Angus Keogh**  
Orthopaedic Surgeon  
Perth Upper Limb Surgery  
Suite 315/25 McCourt Street  
Subiaco WA 6008  
9489 8784

**Mr Omar Khorshid**  
Orthopaedic Surgeon  
Coastal Orthopaedic Group  
Bethesda Hospital,  
25 Queenslea Drive  
Claremont WA 6010  
9230 6333

**Mr Peter D'Alessandro**  
Orthopaedic Surgeon  
Coastal Orthopaedic Group  
Bethesda Hospital,  
25 Queenslea Drive  
Claremont WA 6010  
9230 6333

**Mr Travis Falconer**  
Orthopaedic Surgeon  
Perth Orthopaedic and  
Sports Medicine Centre  
L1, 1 Havelock Street  
West Perth WA 6005  
9212 4200

**Mr Sven Goebel**  
Orthopaedic Surgeon  
Perth Shoulder Clinic  
Bethesda Hospital,  
25 Queenslea Drive  
Claremont WA 6010  
9340 6355

**Dr Eleanor Houghton**  
Orthopaedic Surgeon  
Wrist and Hand Institute  
25 Queenslea Drive  
Claremont WA 6010  
9334 0721

**Mr Humza Khan**  
Orthopaedic Surgeon  
Wrist and Hand Institute  
25 Queenslea Drive  
Claremont WA 6010  
9334 0721

**Mr Douglas Kingwell**  
Orthopaedic Surgeon  
Perth Orthopaedic and  
Sports Medicine Centre  
L1, 1 Havelock Street  
West Perth WA 6005  
9212 4200

**Mr David Dyer**  
Orthopaedic Surgeon  
Jeff Ecker Clinic  
Bethesda Hospital  
Claremont WA 6010  
9334 0750

**Prof Daniel Fick**  
Orthopaedic Surgeon  
63A/85 Monash Avenue  
Nedlands WA 6009  
6465 4455

**Mr Satyen Gohil**  
Orthopaedic Surgeon  
Murdoch Square Tower C, Suite  
205, 44 Barry Marshall Parade  
Murdoch WA 6150  
9312 1135

**Mr Gregory Janes**  
Orthopaedic Surgeon  
Perth Orthopaedic and  
Sports Medicine Centre  
L1, 1 Havelock Street  
West Perth WA 6005  
9212 4200

**Mr Paul Khoo**  
Orthopaedic Surgeon  
Coastal Orthopaedic Group  
Bethesda Hospital,  
25 Queenslea Drive  
Claremont WA 6010  
9230 6333

**Mr James Larkin**  
Orthopaedic Surgeon  
Coastal Orthopaedic Group  
Bethesda Hospital,  
25 Queenslea Drive  
Claremont WA 6010  
9230 6333



# SPECIALISTS ACCREDITED TO PRACTICE

## GYNAECOLOGY

<b>Dr Anna Clare</b> Gynaecologist Woom 43 Richardson Street West Perth WA 6005 9388 7780	<b>Mr Sean Copson</b> Gynaecologist Woom 43 Richardson Street West Perth WA 6005 9388 7780	<b>Mr Michael Gannon</b> Gynaecologist Suite 317, 25 McCourt St Subiaco WA 6008 6478 7825
<b>Prof Roger Hart</b> Gynaecologist Fertility Specialists WA L1, 4/278 Stirling Highway Claremont WA 6010 1300 354 354	<b>Dr Tamara Hunter</b> Gynaecologist Woom 43 Richardson Street West Perth WA 6005 9388 7780	<b>Mr Krishnan Karthigasu</b> Gynaecologist Hollywood Gynaecology Suite 33, 85 Monash Avenue Nedlands WA 6009 9389 5065
<b>Mr Hervinder Kaur</b> Gynaecologist Rockingham Women's Health Centre Unit 1, 11 Minden Lane Baldivis WA 6171 9591 8943	<b>Dr Robyn Leake</b> Gynaecologist Hollywood Gynaecology L1, Suite 32, 85 Monash Avenue Nedlands WA 6009 08 9389 5065	<b>Mr Sebastian Leathersich</b> Gynaecologist Fertility Specialists WA L1, 4/278 Stirling Highway Claremont WA 6010 1300 354 354
<b>Mr John Love</b> Gynaecologist Fertility Specialists WA L1, 4/278 Stirling Highway Claremont WA 6010 1300 354 354	<b>Dr Alisha McCreery</b> Gynaecologist Fertility Specialists WA L1, 4/278 Stirling Highway Claremont WA 6010 1300 354 354	<b>Dr Rose McDonnell</b> Gynaecologist Fertility Specialists WA L1, 4/278 Stirling Highway Claremont WA 6010 1300 354 354
<b>Mr Richard Murphy</b> Gynaecologist 7 Ellen Street Subiaco WA 6008 9200 6140	<b>Mr Christopher Nichols</b> Gynaecologist Suite 67, 3 Barry Marshall Parade Murdoch WA 6150 9332 5276	<b>Mr Roger Perkins</b> Gynaecologist Fertility Specialists WA L1, 4/278 Stirling Highway Claremont WA 6010 1300 354 354

<b>A/Prof Matthew Lawson-Smith</b> Orthopaedic Surgeon Murdoch Orthopaedic Clinic Suite 10, 100 Murdoch Drive Murdoch WA 6150 6332 6325	<b>Mr Toby Leys</b> Orthopaedic Surgeon Coastal Orthopaedic Group Bethesda Hospital, 25 Queenslea Drive Claremont WA 6010 9230 6333	<b>Mr Antony Liddell</b> Orthopaedic Surgeon Perth Orthopaedic and Sports Medicine Centre L1, 1 Havelock Street West Perth WA 6005 9212 4200
<b>Mr Abhirup Lobo</b> Orthopaedic Surgeon Jeff Ecker Clinic Bethesda Hospital Claremont WA 6010 9334 0750	<b>Mr Dror Maor</b> Orthopaedic Surgeon Coastal Orthopaedic Group Bethesda Hospital, 25 Queenslea Drive Claremont WA 6010 9230 6333	<b>Mr Daniel Meyerkort</b> Orthopaedic Surgeon Perth Orthopaedic and Sports Medicine Centre L1, 1 Havelock Street West Perth WA 6005 9212 4200
<b>Mr Patrick Michalka</b> Orthopaedic Surgeon Suite 12, 57 Shenton Avenue Joondalup WA 6027 6314 1198	<b>Mr Alex O'Beirne</b> Orthopaedic Surgeon Western Orthopaedic Clinic Suite 37, 85 Monash Avenue Nedlands WA 6009 9489 8799	<b>Mr Taro Okamoto</b> Orthopaedic Surgeon Coastal Orthopaedic Group Bethesda Hospital, 25 Queenslea Drive Claremont WA 6010 9230 6333
<b>Mr Jean-Louis Papineau</b> Orthopaedic Surgeon Coastal Orthopaedic Group Bethesda Hospital, 25 Queenslea Drive Claremont WA 6010 9230 6333	<b>Mr Michael Perret</b> Orthopaedic Surgeon Perth Shoulder Clinic Bethesda Hospital, 25 Queenslea Drive Claremont WA 6010 9340 6355	<b>Mr Ross Radic</b> Orthopaedic Surgeon Perth Orthopaedic and Sports Medicine Centre L1, 1 Havelock Street West Perth WA 6005 9212 4200
<b>Mr Brendan Ricciardo</b> Orthopaedic Surgeon Coastal Orthopaedic Group Bethesda Hospital, 25 Queenslea Drive Claremont WA 6010 9230 6333	<b>Mr Xiang Salim</b> Orthopaedic Surgeon Coastal Orthopaedic Group Bethesda Hospital, 25 Queenslea Drive Claremont WA 6010 9230 6333	<b>Mr Matthew Scaddan</b> Orthopaedic Surgeon Coastal Orthopaedic Group Bethesda Hospital, 25 Queenslea Drive Claremont WA 6010 9230 6333
<b>Mr Simon Zilko</b> Orthopaedic Surgeon Suite 64, Level 4, 3 Barry Marshall Parade Murdoch WA 6150 6166 3779		



SPECIALISTS ACCREDITED TO PRACTICE

**Dr Jennifer Pontre**  
Gynaecologist  
Hollywood Gynaecology  
Suite 33, 85 Monash Avenue  
Nedlands WA 6009  
9389 5065

**Mr Steven Singh**  
Gynaecologist  
Gynaecology Solutions  
231 Timberlane Drive  
Woodvale WA 6026  
9309 3222

**Dr Mini Zachariah**  
Gynaecologist  
Suite 43, 85 Monash Avenue  
Nedlands WA 6009  
9389 5000

FERTILITY

**Prof Roger Hart**  
Gynaecologist  
Fertility Specialists WA  
L1, 4/278 Stirling Highway  
Claremont WA 6010  
1300 354 354

**Mr John Love**  
Gynaecologist  
Fertility Specialists WA  
L1, 4/278 Stirling Highway  
Claremont WA 6010  
1300 354 354

**Dr Alisha McCreery**  
Gynaecologist  
Fertility Specialists WA  
L1, 4/278 Stirling Highway  
Claremont WA 6010  
1300 354 354

**Dr Rose McDonnell**  
Gynaecologist  
Fertility Specialists WA  
L1, 4/278 Stirling Highway  
Claremont WA 6010  
1300 354 354

**Mr Christopher Nichols**  
Gynaecologist  
Suite 67, 3 Barry Marshall Parade  
Murdoch WA 6150  
9332 5276

**Mr Roger Perkins**  
Gynaecologist  
Fertility Specialists WA  
L1, 4/278 Stirling Highway  
Claremont WA 6010  
1300 354 354

**Dr Jennifer Pontre**  
Gynaecologist  
Hollywood Gynaecology  
Suite 33, 85 Monash Avenue  
Nedlands WA 6009  
9389 5065

PLASTIC SURGERY

**Mr Lewis Blennerhassett**  
Plastic Surgeon  
Subiaco Plastic Surgery  
69 Thomas Street  
Subiaco WA 6008  
9381 6977

**Mrs Sharon Chu**  
Plastic Surgeon  
Redimed  
1 Frederick Street  
Belmont WA 6104  
9230 0900

**Mr David Gillett**  
Plastic Surgeon  
Ethicos Institute  
Suite 1, 136 Railway Street  
Cottesloe WA 6011  
9284 4966

**Mr Mark Hanikeri**  
Plastic Surgeon  
Suite 215, 25 McCourt Street  
Subiaco WA 6008  
9380 0311

**Mr Timothy Hewitt**  
Plastic Surgeon  
Suite 21, 3 Wexford Street  
Subiaco WA 6008  
9388 9222

**Mr Mark Lee**  
Plastic Surgeon  
Suite 21-22, 3 Wexford Street  
Subiaco WA 6008  
9382 3340

**Mr Craig Smith**  
Plastic Surgeon  
17 Colin Street  
West Perth WA 6005  
9321 4420

**Prof. Colin Song**  
Plastic Surgeon  
Fiona Stanley Hospital  
11 Robin Warren Drive  
Murdoch WA 6150  
6152 2222

PALLIATIVE CARE

**Dr Keiron Bradley**  
Palliative Care Specialist  
Bethesda Health Care  
25 Queenslea Drive  
Claremont WA 6010  
9340 6311

**Dr Adele Clair**  
Palliative Care Specialist  
Bethesda Health Care  
25 Queenslea Drive  
Claremont WA 6010  
9340 6311

**Dr Gillian Mitchell**  
Palliative Care Specialist  
Bethesda Health Care  
25 Queenslea Drive  
Claremont WA 6010  
9340 6311

**Dr Paula Moffat**  
Palliative Care Specialist  
Bethesda Health Care  
25 Queenslea Drive  
Claremont WA 6010  
9340 6311

**Dr Trent Price**  
Palliative Care Specialist  
Bethesda Health Care  
25 Queenslea Drive  
Claremont WA 6010  
9340 6311



SPECIALISTS ACCREDITED TO PRACTICE

PAIN MANAGEMENT

**Mr Ravi Agrawal**  
Pain Management  
biio  
224 Rokeby Road  
Subiaco WA 6008  
1300 184 664

**Mr Duane Anderson**  
Pain Management  
Suite 311, 25 McCourt Street  
Subiaco WA 6008  
6185 3068

**Mr Chin-Wern Chan**  
Pain Management  
Suite 48, 85 Monash Avenue  
Nedlands WA 6009  
6382 0266

**Mr Patrick Coleman**  
Pain Management  
Claremont Pain Clinic  
Suite 12/237 Stirling Highway  
Claremont WA 6010  
9385 1323

**Dr Stephanie Davies**  
Pain Management  
LessPain  
5/136 Railway Street  
Cottesloe WA 6011  
0433 428 437

**Mr Daniel Ellyard**  
Pain Management  
Optimise Pain Management  
4/202 Hampden Road  
Nedlands WA 6009  
6183 1817

**Mr John Salmon**  
Pain Management  
Unit 2, 89 Forrest Street  
Cottesloe WA 6011  
9284 6005

**Dr Pavla Walsh**  
Pain Management  
Painless Clinic  
136 Railway Street  
Cottesloe WA 6011  
1300 429 411

GENERAL SURGERY

**Dr Farah Abdulaziz**  
Surgeon  
25 Charles Street  
South Perth WA 6151  
9310 3934

**Mr Hairul Ahmad**  
Surgeon  
Perth General Surgery  
Suite 12, 221 Willmott Drive  
Waikiki WA 6169  
9592 2298

**Prof Jeffrey Hamdorf**  
Surgeon  
Western Surgical Health  
55 Hampden Road  
Nedlands WA 6009  
6424 8596

UROLOGY

**Mr James Chen**  
Urological Surgeon  
L1, 4 Antony Street  
Palmyra WA 6157  
6363 5688

**Mr Melvyn Kuan**  
Urological Surgeon  
L1, 4 Antony Street  
Palmyra WA 6157  
9339 8893

**Mr Mikhail Lozinskiy**  
Urological Surgeon  
L1, 4 Antony Street  
Palmyra WA 6157  
9528 7734

**Mr Manmeet Saluja**  
Urological Surgeon  
Perth Urology Clinic  
Sutie 15, 85 Monash Drive  
Nedlands WA 6009  
9322 2435

**Mr David Sofield**  
Urological Surgeon  
4 Antony Street  
Palmyra WA 6157  
9339 1932

**Mr Andrew Tan**  
Urological Surgeon  
Perth Urology Clinic  
Sutie 15, 85 Monash Drive  
Nedlands WA 6009  
9322 2435

ORAL & MAXILLOFACIAL SURGERY

**Mr Franc Henze**  
Oral & Max Facial Surgeon  
Faceworx  
206 Hampden Road  
Nedlands WA 6009  
9344 3907

**Dr Sophie Mougos**  
Oral & Max Facial Surgeon  
OMF Surgery  
Suite 11, 178 Cambridge Street  
Wembley WA 6014  
9381 6686

CARDIOLOGY

**Clinical Prof Jenny Deague**  
Cardiologist  
Northern Hearts WA  
Suite 18, Level 2, Joondalup  
Private Hospital, Shenton Avenue  
Joondalup WA 6027  
9408 8444

**Prof David Playford**  
Cardiologist  
Advara Heartcare  
Suite 20/21, 85 Monash Avenue  
Nedlands WA 6009  
9480 3060

**Dr Jonathan Teoh**  
Cardiologist  
Northern Hearts WA  
Suite 18, Level 2, Joondalup  
Private Hospital, Shenton Avenue  
Joondalup WA 6027  
9408 8444



# SPECIALISTS ACCREDITED TO PRACTICE

## HAEMATOLOGY

**Prof Ross Baker**

Haematologist  
Western Haematology and  
Oncology Clinics  
18 Prowse street  
West Perth WA 6005  
6146 1400

**Dr Ramdas Tampi**

Haematologist  
Clinipath  
310 Selby Street North  
Osborne Park WA 6017  
9371 4530

## RESPIRATORY & SLEEP MEDICINE

**Dr Jack Philpott**

Respiratory Physician  
Sleep WA  
Suite 38, 85 Monash Avenue  
Nedlands WA 6009  
1300 570 700

## INFECTIOUS DISEASE

**Dr Gar-hing Lee**

Physician  
Joondalup Health Campus  
Suite 3, Shenton Avenue  
Joondalup WA 6027  
9371 0784

**Dr Duncan McLellan**

Infectious Diseases Physician  
Western Diagnostics  
74 McCoy Street  
Myaree WA 6154  
9317 0999





# *Personalised Care*



25 Queenslea Drive Claremont WA 6010  
+61 (8) 9340 6300  
[bethesda.org.au](http://bethesda.org.au)